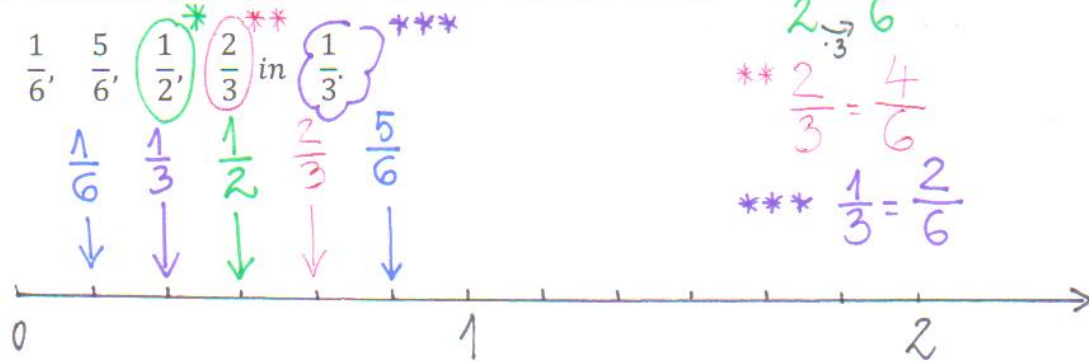


Rešitve:

1. Na številskem poltraku upodobi dane ulomke:



2. Decimalno število 15,827491 zaokroži na:

a) eno dicimalko. $15,827491 \doteq 15,8$

b) tisočine. $15,827491 \doteq 15,827$

c) celote. $15,827491 \doteq 16$

d) stotine. $15,827491 \doteq 15,83$

3. Pretvori:

23 kg = 2300 dag

3 € 7 c = 3,07 c

54 000 cm = 540 m

1° 7' = 67 , 1° = 60'

5 hl = 5000 dl

2 000 cm² = 20 dm²

800 min = 13 h 20 min

$800 : 60 = 13$
200
20 ost.

4. Izračunaj:

a) $38,66 + 52,87$

b) $523,02 + 399,14$

c) $9,007 + 30,883$

d) $68,86 - 18,83$

e) $129,43 - 65,3$

f) $100,1 - 33,654$

$$\begin{array}{r} \text{a)} \quad 38,66 \\ + \quad 52,87 \\ \hline 91,53 \end{array}$$

$$\begin{array}{r} \text{d)} \quad 68,86 \\ - \quad 18,83 \\ \hline 50,03 \end{array}$$

$$\begin{array}{r} \text{b)} \quad 523,02 \\ + \quad 399,14 \\ \hline 922,16 \end{array}$$

$$\begin{array}{r} \text{e)} \quad 129,43 \\ - \quad 65,30 \\ \hline 64,13 \end{array}$$

Lahko
dopišeš 0.

$$\begin{array}{r} \text{c)} \quad 9,007 \\ + \quad 30,883 \\ \hline 39,890 \text{ ali } 39,89 \end{array}$$

$$\begin{array}{r} \text{f)} \quad 100,100 \\ - \quad 33,654 \\ \hline 66,446 \end{array}$$